



SEA
GRA
TH
SM
S
S
S

 **WESTERLY** Konsort 29

KONSORT 29 FAMILY CRUISER

The Westerly Konsort 29 is a good looking family cruising yacht, designed by Laurent Giles & Partners, with spacious accommodation for up to six in two separate cabins. She is an ideal boat for family cruising being easily handled and having good performance under sail and power.

Forecabin Twin 'V' berths with infill to make a comfortable double, with...

Separate heads to port with marine WC and stainless steel washbasin with hot and cold supply plus shower available as an option. There is a hanging locker opposite the heads with ample space for shoregoing clothes and oilskins.

Saloon large saloon measuring 9' 4" by 10' 6" (beam) with two single berths. The port berth converting to a double quickly and easily with the seatbacks being removable to increase the width of the berths. When these berths are being used as settees the space behind the backrest is used as stowage for sleeping bags, clothing etc. The seatbacks also double as lee boards when dropped into retaining slots on the bulkheads ensuring the comfort of the crew on passage. Headroom in the saloon is 6'.

Galley situated to starboard by the hatchway in the most stable and best ventilated part of the boat. A two-burner cooker with oven and grill is fitted as standard.



There is a large stainless steel sink supplied from a 30 gallon stainless steel fresh water tank.

A large well-insulated icebox is fitted below the work surface and there is ample stowage for provision, plates and cups etc.

Quarter Berth to port with stowage bins under. All the internal hull surfaces are fully lined against condensation; deck head areas have removable ply panels, allowing easy access for additional deck fittings, wiring runs etc.

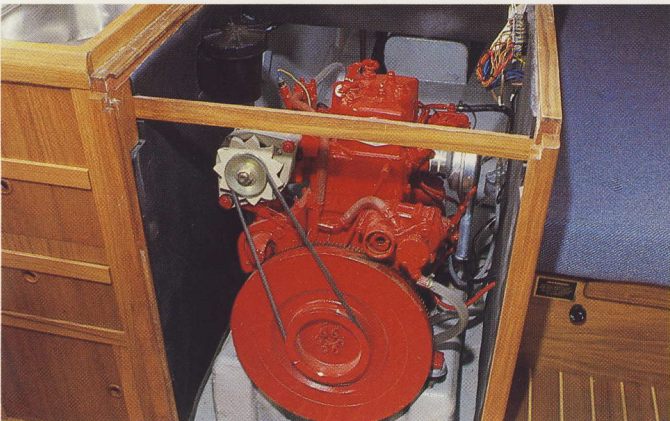
Chart Table to port with inside stowage of charts. A chart light is fitted and there is ample space outboard for books and the mounting of instruments.





On Deck Bow and stern pulpits with double stainless steel guard rails and well positioned teak grabrails make for safe movement on deck in all weathers. A large transparent forehatch opening into forecabin gives light and ventilation. Mooring cleats are fitted on the bow, stern and midships.

Cockpit Deep self-draining cockpit with well angled coamings for maximum comfort. Two-speed foresheet winches on coamings with halyard winches placed in deck alongside main hatch. Halyards and slab reefing lines are led aft with stoppers making it possible to use the halyard winches for both reefing and hoisting sail.



Engine Consort is powered by a well known 18hp twin cylinder diesel engine, which drives the boat quietly and economically at over six knots through a conventionally driven two-bladed propeller. The engine is fitted with decompressors and provision for hand-starting. The sound-deadened engine compartment is designed to give maximum access for routine maintenance.



The Rig A single spreader masthead rig with a deck stepped mast. All standing rigging is stainless steel with prestretched Terylene running rigging.

The cap shrouds are taken to chain plates bolted through the main bulkhead. The lower shrouds are taken to stainless steel tie bars secured to heavy webs glassed to the hull outboard of the saloon seatbacks.

The Rudder is transom hung and partly balanced ensuring excellent manoeuvrability under sail power. The massive stainless rudder fittings are bolted through the transom which is reinforced by marine plywood on the centreline.

Quality The keel is made of cast iron and is secured by marine grade stainless steel studs with backing plates and nuts inside the boat. Every Consort is inspected during building by a Lloyds surveyor and a Lloyds Hull Construction Certificate is supplied as part of the standard inventory.

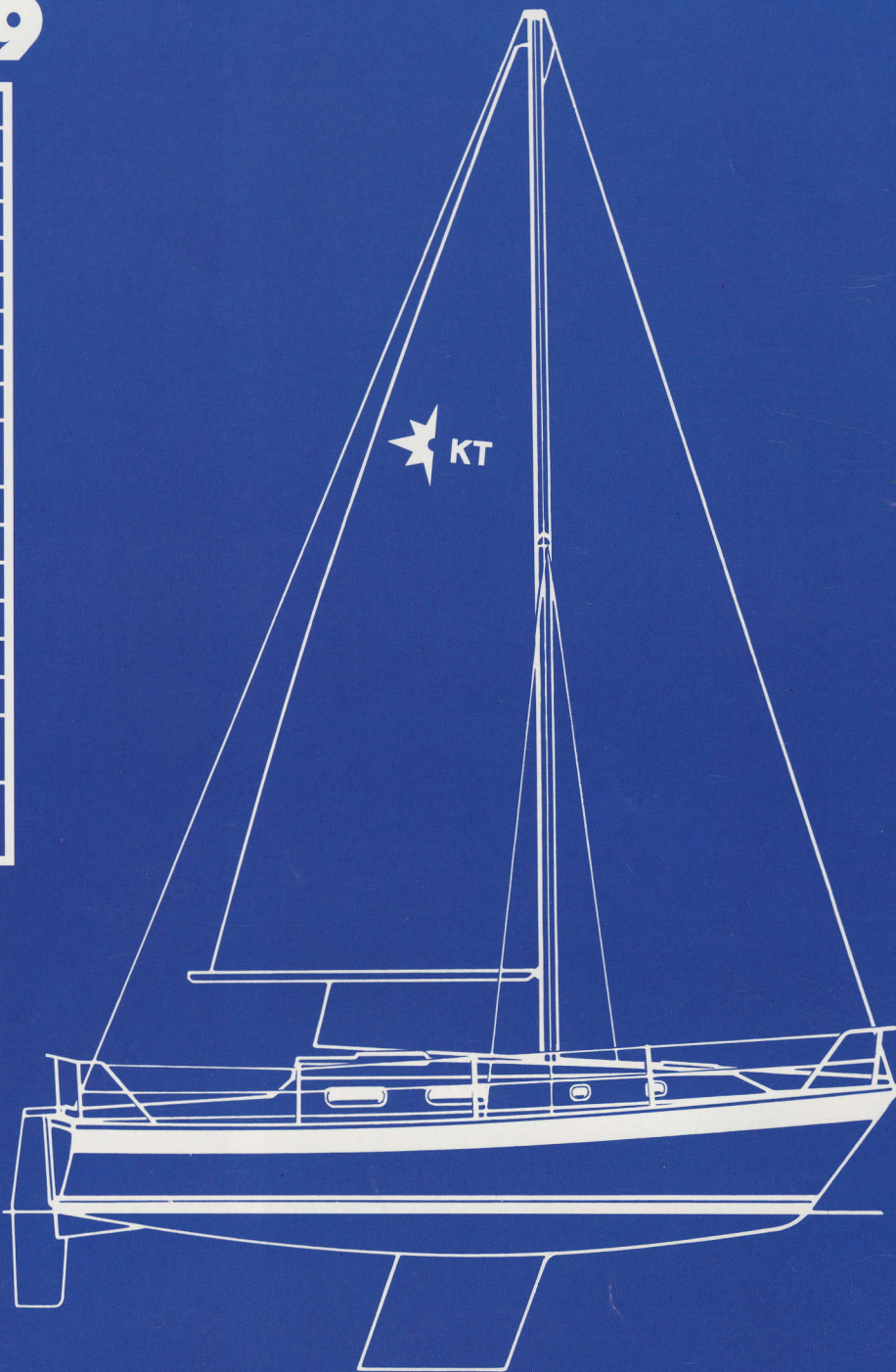
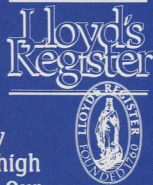
THE WESTERLY KONSORT 29

SAIL AREAS		
Mainsail	180sq.ft.	16.72sq.m.
No. 1 Genoa	333sq.ft.	30.94sq.m.
No. 2 Genoa	257sq.ft.	23.88sq.m.
No. 1 Jib	168sq.ft.	15.61sq.m.
No. 2 Jib	120sq.ft.	11.15sq.m.
No. 3 Jib	68sq.ft.	6.32sq.m.
Spinnaker	753sq.ft.	69.96sq.m.
SPECIFICATION		
Length overall (excluding rudder)	28' 10"	8.80m
Length waterline	25' 6"	7.77m
Beam	10' 9"	3.29m
Draft - Fin Keel	5' 4"	1.62m
Draft - Twin Keels	3' 2½"	0.98m
DESIGNED WEIGHTS		
Displacement	8516lb	3870kg
Ballast - Fin & Twin Keels	3200lb	1451kg
Mast height above waterline	40' 4"	12.29m

Specifications and standard inventory are liable to change according to availability of bought in and manufactured supplies. Some items shown in the photographs are not included in the standard price.

CONSTRUCTION STANDARDS

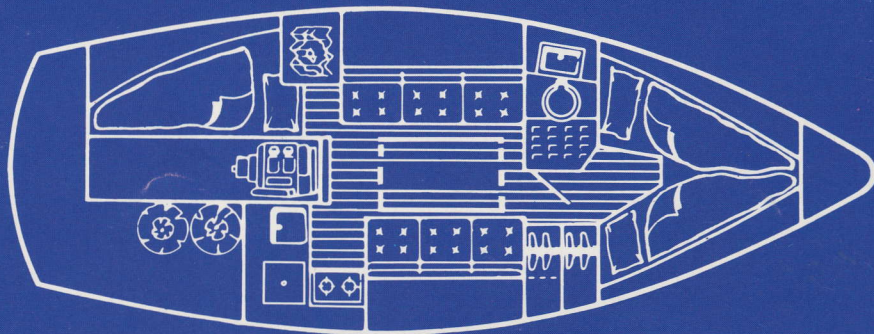
Lloyds Hull Construction Certificate. Double gelcoat to both external hull and internally to waterline. Temperature and humidity controlled laminating. Very high degree of lamination control. Our own carefully selected teak. Quality control system with 200 Lloyds approved items. Solid teak toe rails grab handles and rubbing strake for durability. 316 high grade stainless steel from our own fabrication factory. Fire resistant foam in all upholstery. Keel studs above Lloyds specification with locking nuts. Stainless steel water tanks.



WESTERLY
Westerly Yachts Limited, 47 Aston Road,
Waterlooville, Portsmouth, Hants PO7 7XJ.
© A subsidiary of Westerly plc

THE WESTERLY RANGE - OCEAN CRUISING YACHTS -
OCEANMASTER 48, OCEANLORD 41, OCEANRANGER 38,
PERFORMANCE YACHTS - TYPHOON 37, STORM 33,
TEMPEST 31. FAST CRUISING YACHTS - SEAHAWK 35,
STORM CRUISER 33, FULMAR 32, KONSORT 29, MERLIN 29.
DECK SALOON YACHTS - RIVIERA 35.

SALES OFFICES: HAMBLE POINT (0703) 455233, Brighton
(0273) 609556, Ipswich (0473) 681677, Plymouth (0752) 672828.
DISTRIBUTORS: Scotland and N. Ireland - Euroyachts Ltd. -
Glasgow (041) 429 3766. S. Ireland - Neil Watson
Ltd. - (0001) 806070. N. England and N. Wales - Dickies
of Bangor - (0248) 352775. S. Wales - Dickies of Swansea -
(0792) 645303. Channel Islands - New Horizon Yachts
Agency - (0481) 26335. West Germany - (04562) 6247.
Netherlands - (5149) 1566. Belgium - (3) 232 1210. France
- (99) 885601 - (40) 820464 - (94) 434594. Japan - (03)
210 4480. Portugal - (1) 2844248.
AFTER SALES SERVICE (0705) 256406.



The only sailboat builder in the world with BS5750.



100 Freefone Westerly Yachts. Demonstrations are available 7 days a week.



WESTERLY

Westerly Yachts Limited

Designers and Builders of Fine Craft
Hamble Point Marina, School Lane, Hamble
Southampton SO3 5NB
Telephone: Southampton (0703) 455233
Telex: 477498

WESTERLY KONSORT 29

SEPTEMBER 1987

THE STANDARD SPECIFICATION COMPRISES:

SAILS AND RIGGING: Mainsail & No.1 jib. Silver anodised mast & boom. Stainless steel standing rigging. Terylene running rigging. Main and jib halyards led aft. Topping lift. Burgee halyard. Slab reefing with lines led aft. Kicking strap.

DECK FITTINGS: Two top action two speed foresheet winches. Two 20c single speed top action halyard winches. Two winch handles. Stainless steel bow & stern pulpits. Gate in stern rail. Stainless steel double lifelines with 24" stanchions. Spinnaker deck hardware (excluding spinnaker winches & boom). Sliding jib sheet leads. Twin bow roller and chain pipe. 25 lb plough anchor. Anchor stemhead stowage. 15 fathoms 1/4" chain. Main sheet track & traveller. One forward, two stern and two 'midships mooring cleats. Two bow fairleads. Stainless steel stay and shroud plates. Ensign socket on stern pulpit. Teak handrails on cabin top. Teak washboards for sprayhood. Bi-colour navigation lights on pulpit. Steaming and stern lights. Tiller steering. Grey treadmaster on cockpit-coamings and seats. Grey non slip deck paint. Compass. Gas locker with 6 lb Gaz bottle. Cockpit sail locker. Teak toe rail. Four fenders. Two 40' mooring lines.

CABIN FITTINGS: Four bulkhead mounted saloon lights, chart, galley & quarter berth lights. Two lights in forecabin and one in heads. Central circuit breaker panel. Complete set of berth cushions with seatbacks. Cabin sides lined in foam backed vinyl. Foam backed deckhead panels in saloon. Fixed saloon table with bottle stowage. Galley unit with stainless steel sink. Drained ice box. Work surfaces. Drawers. Two burner cooker with grill and oven in gimbals using gas. Plate & cup stowage. Water supply to stainless steel galley sink and sliding wash basin in head from 30 gallon stainless steel tank. Marine W.C. and deck ventilator. Forward cabin with two berths & lockers under. Hanging locker. Cabin ventilation grille. Hand rails. Chart table & stowage. Holly and Teak flooring throughout. Double berth conversion in main & forward cabins. Opening ports in heads, hanging locker and forward cabin. Perspex main and forward hatches. Dry powder fire extinguisher fitted. Curtain rails and runners in saloon, forecabin and heads.

ENGINE: Volvo 2002 diesel. Flexible mounting. 50 amp alternator. Two bladed propeller. Water cooled exhaust. Control panel. 102 amp/hr battery in double battery box. Electric start. Remote controls. 15 gallon fuel tank. Low maintenance stern gland. Sound deadened engine box.

GENERAL: White hull. Fin keel. Blue moulded trim line. Alloy framed window. Teak rubbing strake. Cove line. Marked waterline. Bronze seacocks & underwater skin fittings. Self-drained cockpit. Bilge pump. Cathodic protection.

LLOYD'S HULL CONSTRUCTION CERTIFICATE

TERMS OF BUSINESS

- 1 A £500 deposit and the Purchaser's signature upon this specification form reserves a boat at the current price pending preparation of a contract by Westerly Yachts Limited. This specification is not the contract and the deposit is returnable to the Purchaser if a contract is not signed.
- 2 One third of the total price, less the initial £500 deposit payable upon signature of the contract. When the contract is signed by the Purchaser and returned a delivery date will be confirmed and the contract will be signed by Westerly Yachts Limited.
- 3 The balance outstanding is payable ten days before completion of the boat at the factory. The boat as described, to specification and standard inventory are liable to change according to availability of bought in and manufactured supplies. Some items shown

WESTERLY YACHTS LIMITED

OPTIONS

KONSORT 29

£	SAILS AND RIGGING
346	No. 1 genoa
289	No. 2 genoa
248	No. 2 jib
138	No. 3 jib
421	Cruising chute - radial head
1036	Rotostay reefkit with special No. 1 genoa and suncover in lieu of standard No. 1 jib
78	Acrylic mainsail cover
122	Tri-colour and white masthead light
142	Cruising chute gear (sheets, block, halyard and downhaul)

DECK FITTINGS

390	Folding sprayhood
176	Spinnaker pole with deck stowage
205	Stainless steel swimming ladder

CABIN FITTINGS

832	Hot and cold pressure water system to all taps plus shower
200	Additional second battery and switch

NAVIGATIONAL EQUIPMENT

232	Mechanical sumlog speed and distance indicator mounted in cockpit
121	V-Tronix combined VHF aerial and Hawk indicator fitted at masthead including wiring and deck plugs through to chart table. 12v. supply
164	Seafarer 5 echosounder on swinging bracket

GENERAL

318	Twin keels in lieu of standard fin
832	Cradle for fin keel model only
368	Delivery to Ocean Village including wet or dry launch

ALL PRICES ARE EX VAT

A FULL LIST OF FACTORY FITTED EXTRAS AND COLOUR OPTIONS IS AVAILABLE ON REQUEST